

Southern Middle School and Southern High School Modernization Project

Educational Specifications and Schematic Design Progress Report



Our Team



Grimm + Parker Architects



Paul Klee AIA, LEED AP, NCARB
Principal-In-Charge
32 years @ G+P



Dave Wolf
LEED AP
Project Manager
15 years @ G+P



Laura Smyles, AIA, WELL AP
Project Architect
Educational Planner
10 years @ G+P

Consultant Team

Raymond Rase PE, PLS
Civil Project Manager
SPECS, inc.

Randall O. Spencer PE, RCDD
IT Systems Department Head / Electrical Engineer
Ascent Engineering Group, Inc.

Randall Daniels ASPE, ICC, NFPA
Mechanical, Plumbing + Fire Protection Engineer
Ascent Engineering Group, Inc.

Ronald Wolfman PE
Structural Engineer
Wolfman + Associates

William Downey
Chief Estimator
Downey + Scott

Additional G+P Project Support

Karen Burlingame AIA, LEED AP
Quality Control + Quality Assurance

Don Porter, AIA
Code + Life Safety

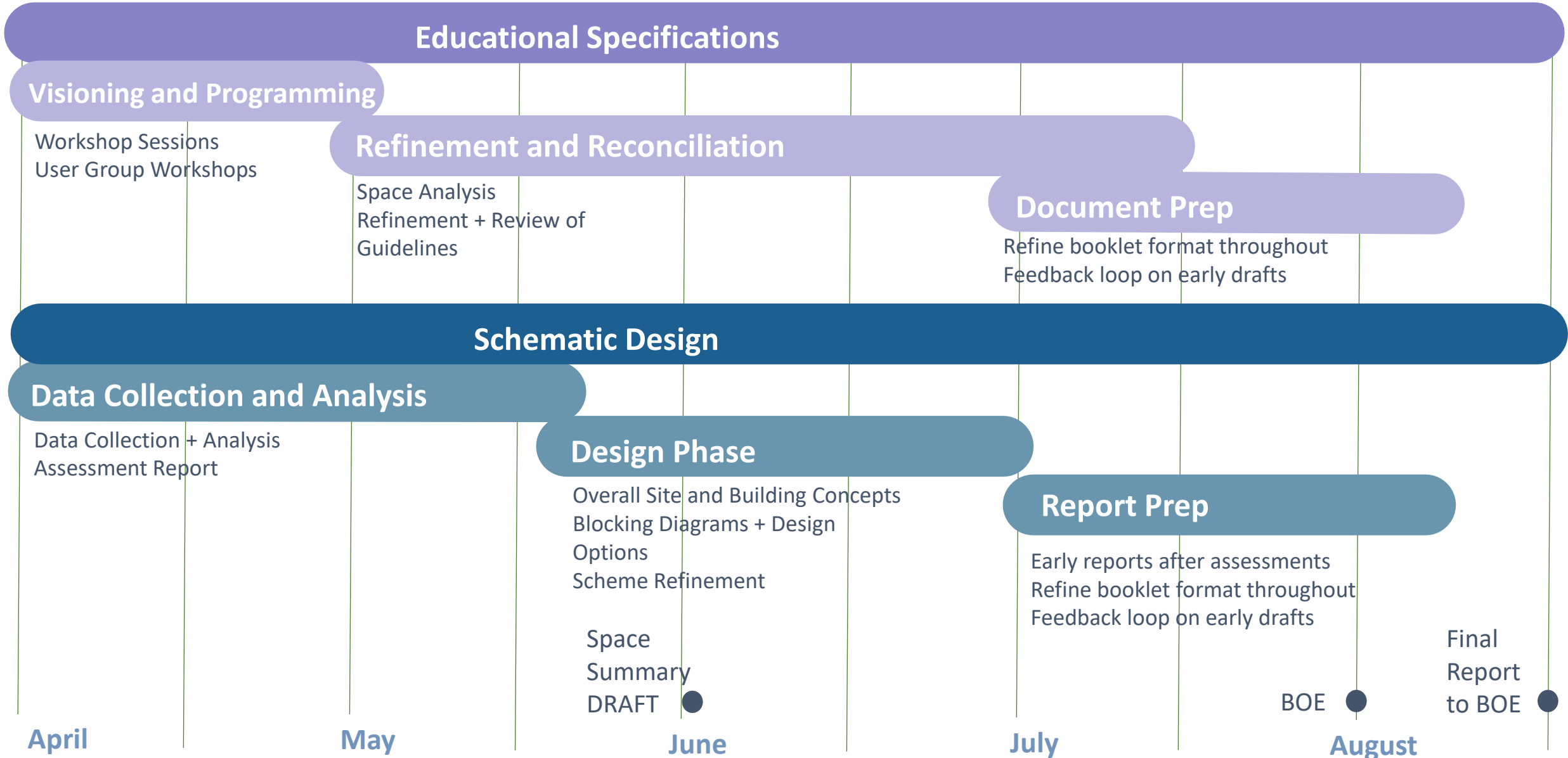
Amy Upton, AIA, LEED Fellow
Sustainability + Environmental Design

Experience: K-12 250+ Educational Projects

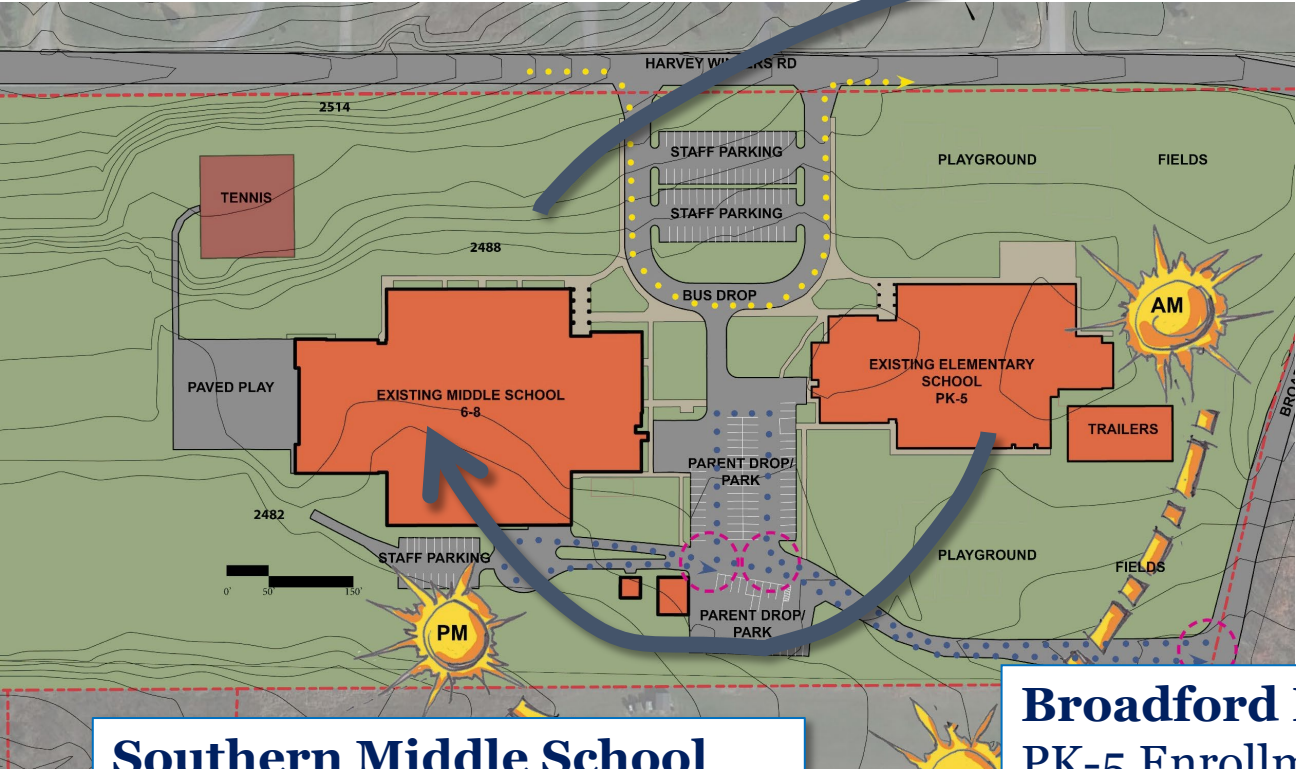
Ranked #3 nationally in K-12 design



Combined Project Schedule



Combined Project Vision



Southern Middle School
6-8 Enrollment:
458 students
IAC State Rated Capacity:
828 students

Broadford Elementary School
PK-5 Enrollment:
539 Students
To be demolished

Southern High School
9-12 Enrollment:
626 students
IAC State Rated Capacity:
1450 students

Enrollment figures as of 6/2022

Engagement - Visioning Questions

What one thing would make the project a success for you?

*What is the greatest opportunity for **INNOVATION** in your new project?*

*What goal is most important for the school to accomplish for **FACULTY + STAFF**?*

*How can the **VALUES** of your school best be reflected in this project?*

*What goal is most important for the project to accomplish for **STUDENTS**?*

Engagement - Visioning Questions

Connection to outdoors + daylight

- KEEPING STAFF
 - 7th GRADE TO BE STANDALONE
 - 8th GRADERS TO TAKE HS CLASSES FOR ACCELERATED LEARNING
 - MORE INTERDISCIPLINARY FOCUS ON TRADE SCHOOLS. KIDS STAY HERE
 - BRING DRIVERS ED ON
 - WHOLE SCALE CHANGE FOR 7th GRADE
 - GETTING HS CREDITS EARLY
 - CULTURES
 - UTILIZING OUT DOOR SPACE FOR ALL SUBJECTS
 - LACKING BETTER AUD. SPACE
 - CAFETERIA - OUTDOOR DINING, CLASSES OUTSIDE
 - BRINGING BACK CURRICULUM
 - WHAT TO DO WITH PLTW STUDENTS THAT DON'T FIT -> BETTER PROGRAM
 - KIDS NEED MOVEMENT - INDUSTRIAL ARTS WOOD SHOP, TECH ED
 - HS -> CTE, FINE ARTS
 - SCIENCE LABS INTEGRATED INTO CLASSROOMS COMPETITIONS
 - SCHEDULE IS TOO TIGHT
 - CAN BE COMBINED
 - CANNOT BE COMBINED
 - ENDLESS OPPORTUNITY FOR LEARNING + TRAINING
 - NOT SACTIONED MS SPORTS

Spaces that support hands-on learning experiences.

Spaces that make all students feel like they matter.



Maximizing spaces that can add long term value to students and community



Engagement - Visioning Questions

*Don't over crowd
the school*

*Knowing that my child
is getting a quality education
and is safe at school.*

Keeping every teacher's job.

*Opens many opportunities to streamline
kids in a pathway of interest.*

Southern 7-12 School - Visi ☆

Google Forms

Questions Responses 17 Settings Total points: 0

Visioning Questions

Creating the vision for the 7-12 school

What one thing would make this project a success for you?

Long answer text

How can the VALUES of your school best be reflected in this project?

Long answer text

What is the greatest opportunity for INNOVATION in your new project?

Long answer text

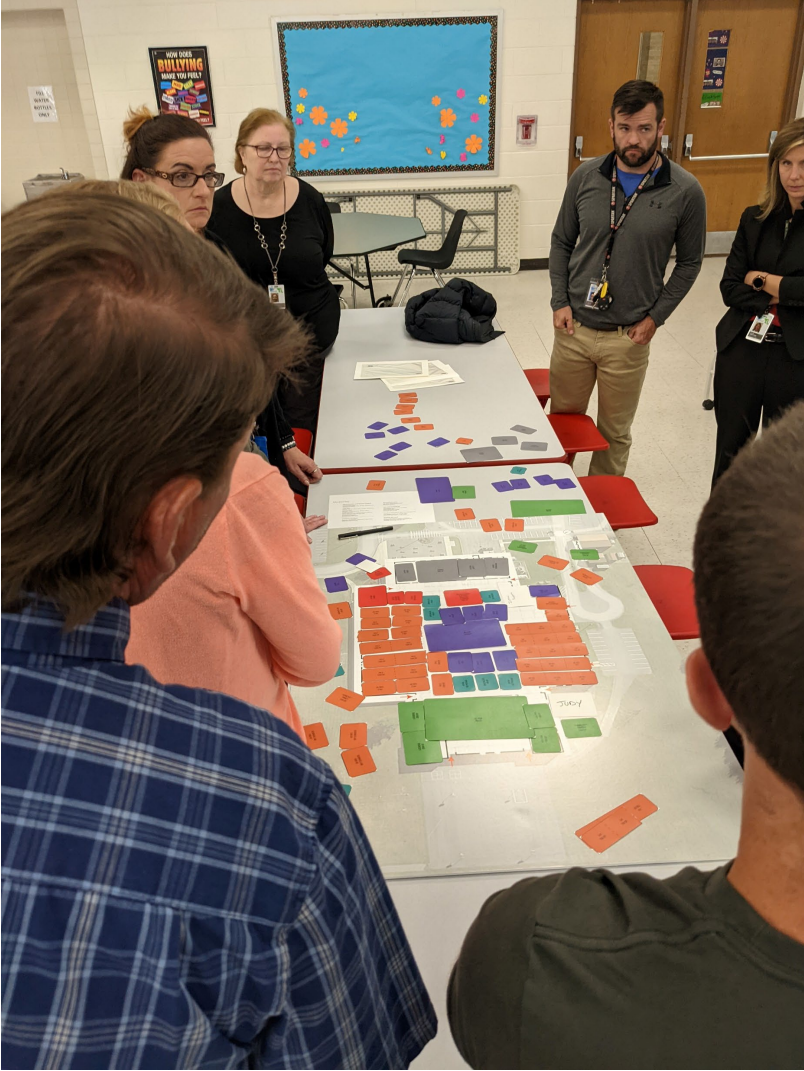
What goal is most important for the project to accomplish for STUDENTS?

Long answer text

What goal is most important for the school to accomplish for FACULTY + STAFF?

Long answer text

Engagement - Model Play



Exploration
Learning about
your program
through
collaboration.

Guiding Principles

Added Value

Quality of Environment

Community + Student Support

Belonging and Safety

Career and College Readiness

Collaboration



Design Considerations – The Blueprint

BLUEPRINT **FOR MARYLAND'S FUTURE**

**Early
Childhood
Education**

**High
Quality &
Diverse
Teachers &
Leaders**

**College &
Career
Readiness**

**More
Resources to
Ensure that All
Students are
Successful**

**Governance &
Accountability**

Design Considerations – IAC Requirements

Projected Enrollment

692 students

Student Rated Capacity

813 students

6

Head Start/PK
Classrooms

4

Kindergarten
Classrooms

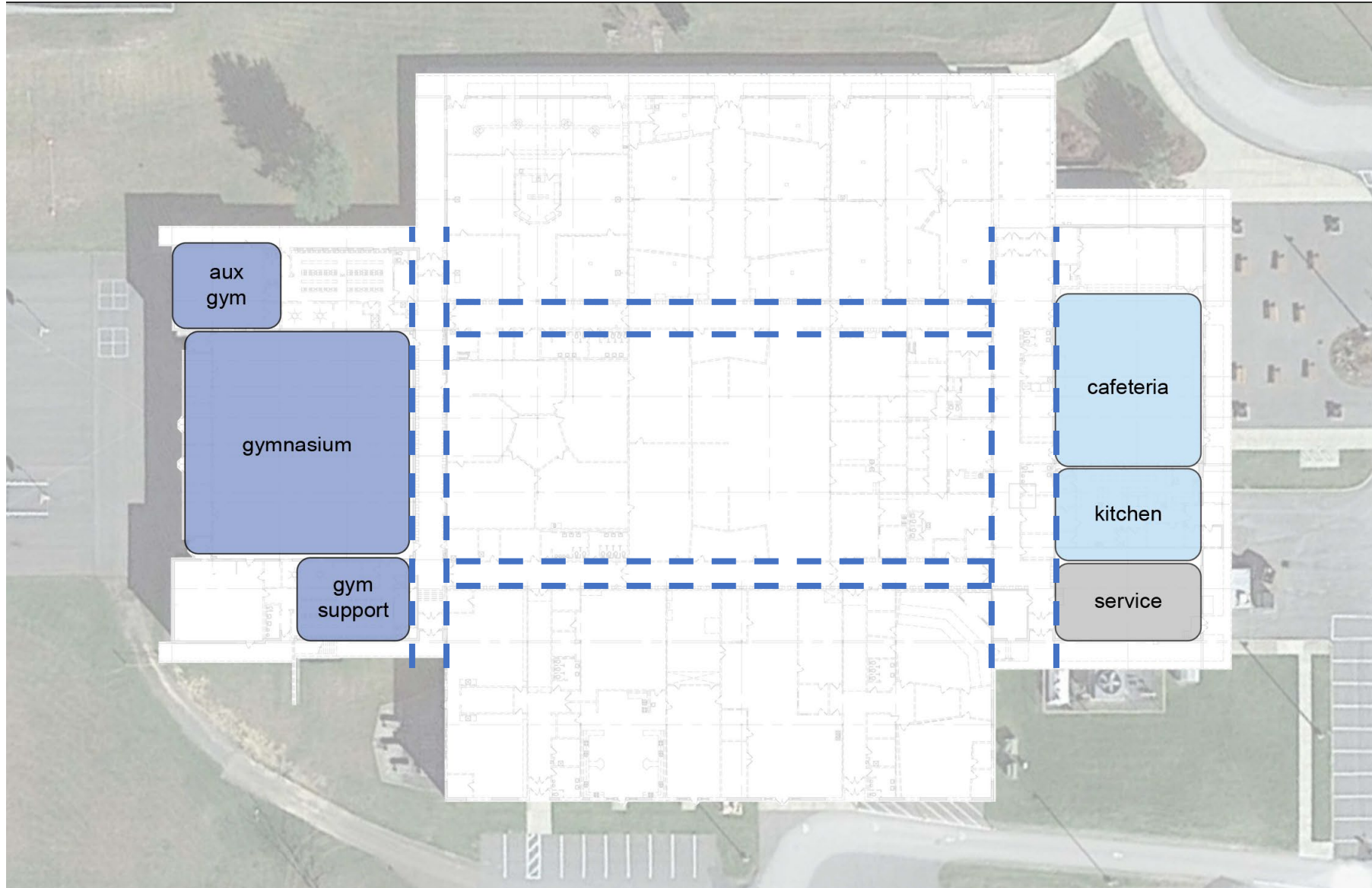
4

Classrooms
per grades 1-6

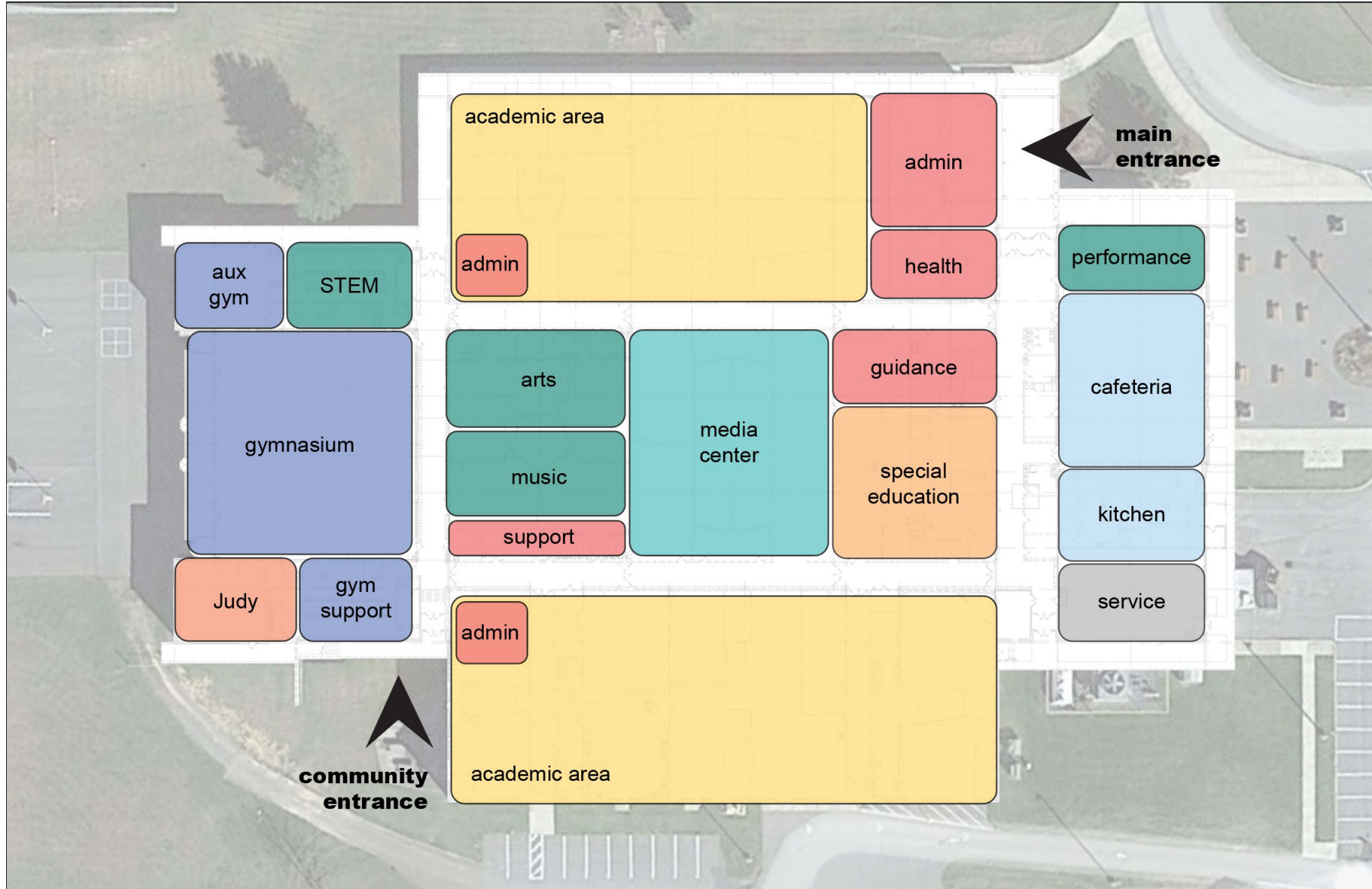
6

Special
Education
classrooms

Design Considerations – Existing Floor Plan



Zoning Approach



PK-6 Program Summary

01

Teaching and Learning

- 40 classrooms
- Shared Teacher Planning Spaces
- Collaborative Learning Areas

31,250 sf

02

Sciences

- 2 classrooms
- 1 Shared STEM Lab

2,500 sf

03

Special Education

- Staff Support Suite
- 2 Inclusion Classrooms
- 2 ALO Classrooms
- 2 STARS Classrooms
- 1 Life Skills Lab
- 1 Sensory Room

6,550 sf

04

Related Arts Education

- 1 Visual Arts Classrooms
- 1 Makerspace/Art Classroom
- 1 Instrumental + Vocal Music Classroom
- 1 Music + Movement Classroom
- 1 Technology Education Lab

5,280 sf

05

Media Center

- 2 Group Instruction Areas
- Collaborative + Soft Seating
- Collection + Stacks Space
- Media Specialist Office

2,800 sf

06

Physical Education

- 1 Main Gym
- 1 Auxiliary Gym
- 2 Locker Rooms
- Storage + Staff Support

10,030 sf

Total Net SF
73,540 sf

PK-6 Program Summary

07

Food Services

- 1 Platform
- 1 Dining Area
- Kitchen + Prep Support

7,405 sf

09

Community Area

- 1 Judy Center
- 2 Outdoor Toilet Rooms

2,100 sf

10

Administration Suite

- Secure Vestibule
- School Resource Officer
- Admin Staff Support
- 1 Conference Room

1,170 sf

11

Health Services Suite

- 1 Waiting Area
- 1 Office/Treatment Area
- 2 Restrooms
- 1 Personal Care Suite

1,010 sf

12

Guidance Suite

- Counselors
- School Psychologist
- Behavior Coach
- School-based Therapist
- Itinerant Offices

1,030 sf

13

Instructional Support

- Faculty Dining + Lounge
- Teacher Workroom

2,060 sf

14

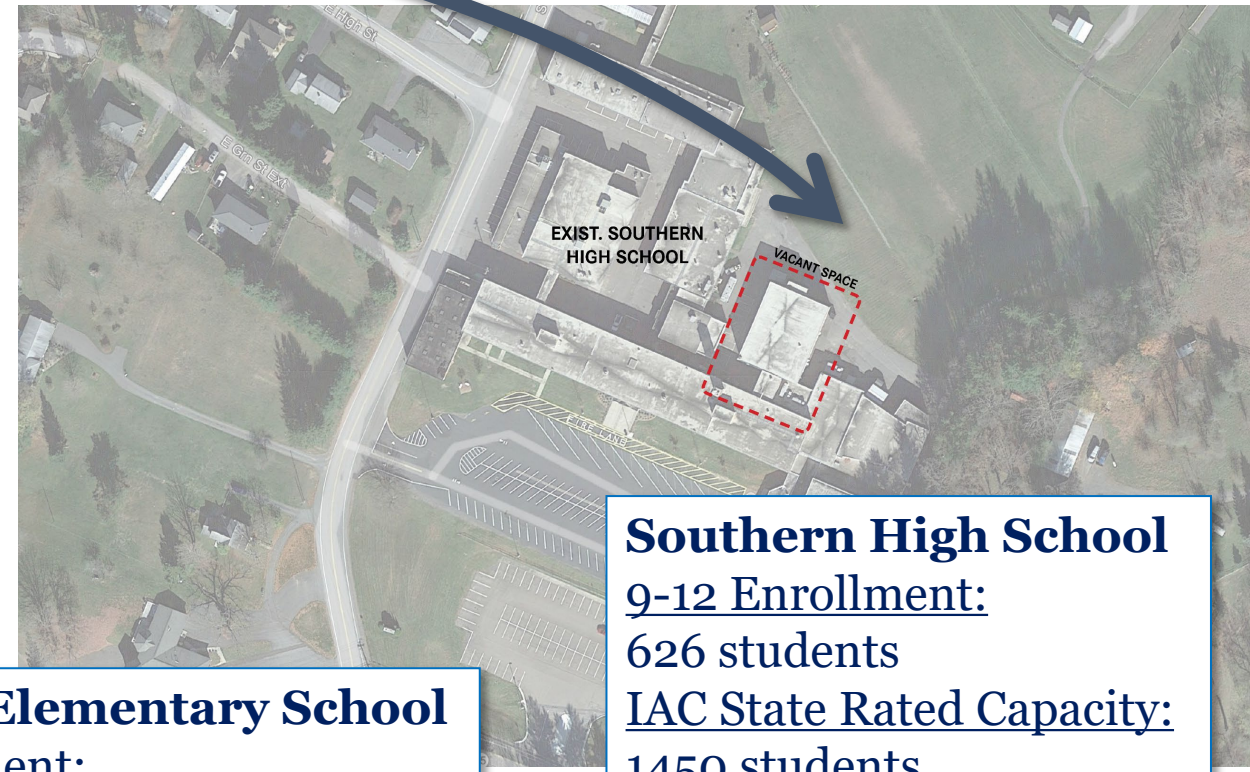
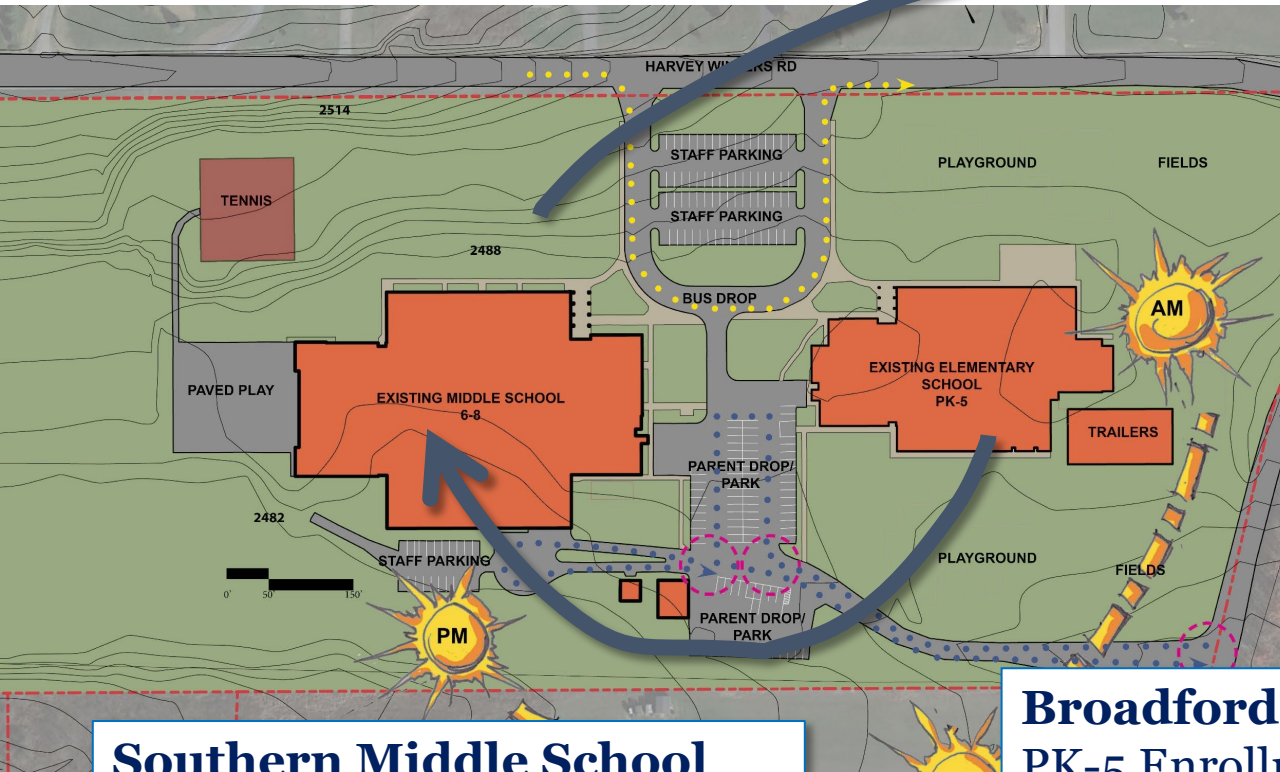
Building Support

- Grounds Maintenance
- Custodial Support
- Network Support
- MEP Support
- Teacher Workroom

1,915 sf

Total Net SF
73,540 sf

Moving 7th and 8th Grade to Southern High



Southern Middle School
6-8 Enrollment:
458 students
IAC State Rated Capacity:
828 students

Broadford Elementary School
PK-5 Enrollment:
539 Students
To be demolished

Southern High School
9-12 Enrollment:
626 students
IAC State Rated Capacity:
1450 students

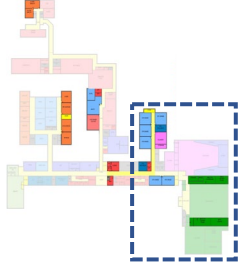
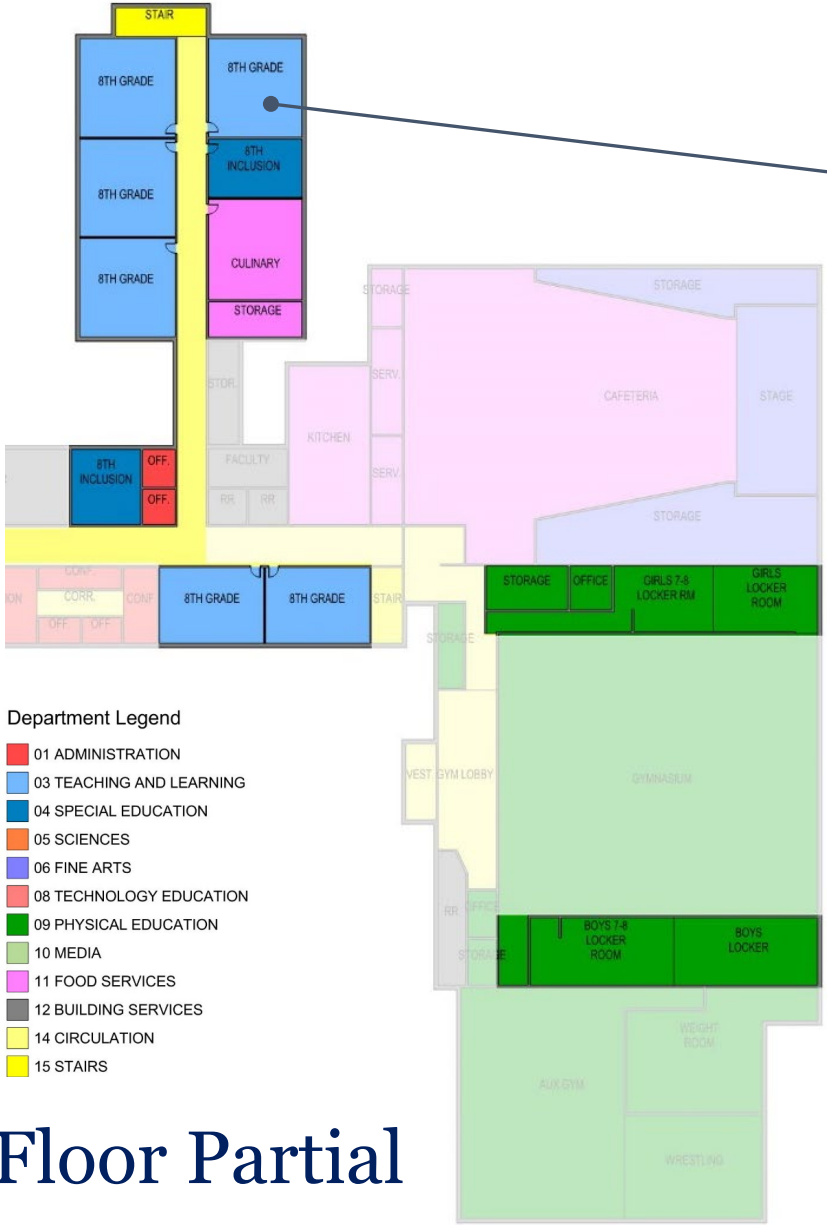
Enrollment figures as of 6/2022

Southern 7-8 - Program at a glance



Southern 7-12 – Proposed Floor Plan

Proposed Added Value

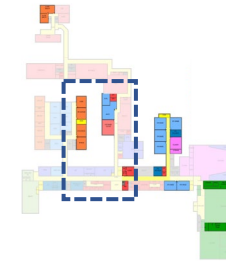


- **8th Grade** learning community
- **Renovate locker rooms** with new lockers and separate 7-8 locker rooms

First Floor Partial

Southern 7-12 – Proposed Floor Plan

Proposed Added Value



- **Oversized Science** rooms separated into two smaller labs
- **8th Grade Tech Ed Lab** adjacent to existing tech ed lab for synergies
- **Nurse's Office** larger and more functional
- **SRO office** relocated to front door

First Floor Partial

Southern 7-12 – Proposed Floor Plan

Proposed Added Value



Department Legend

- 01 ADMINISTRATION
- 03 TEACHING AND LEARNING
- 04 SPECIAL EDUCATION
- 05 SCIENCES
- 06 FINE ARTS
- 08 TECHNOLOGY EDUCATION
- 09 PHYSICAL EDUCATION
- 10 MEDIA
- 11 FOOD SERVICES
- 12 BUILDING SERVICES
- 14 CIRCULATION
- 15 STAIRS

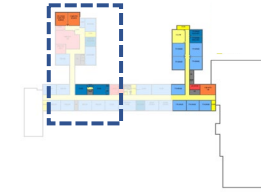


- **Seventh Grade** learning community
- **Dedicated** toilets and Decentralized Admin
- **Fine Arts Lab**

Second Floor Partial

Southern 7-12 – Proposed Floor Plan

Proposed Added Value



Department Legend

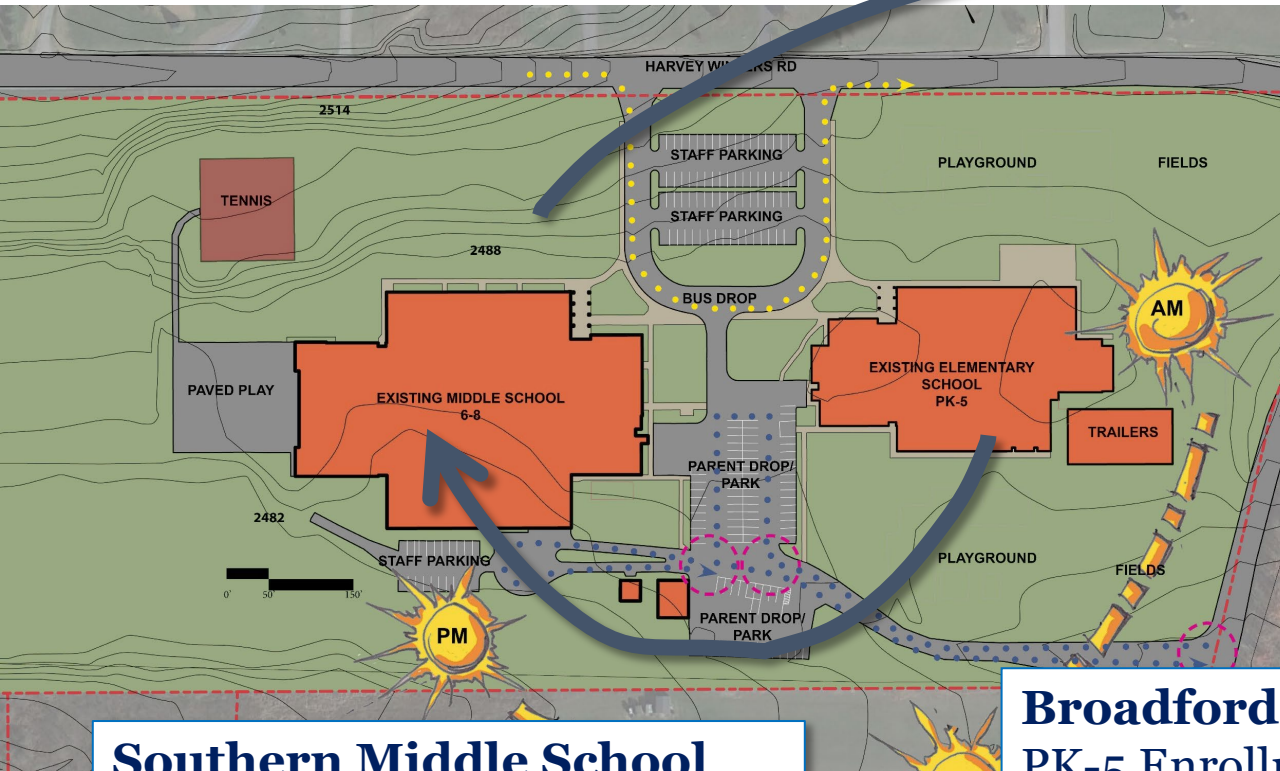
- 01 ADMINISTRATION
- 03 TEACHING AND LEARNING
- 04 SPECIAL EDUCATION
- 05 SCIENCES
- 06 FINE ARTS
- 08 TECHNOLOGY EDUCATION
- 09 PHYSICAL EDUCATION
- 10 MEDIA
- 11 FOOD SERVICES
- 12 BUILDING SERVICES
- 14 CIRCULATION
- 15 STAIRS



- **Separate oversized Computer Science room into two Computer Science rooms**
- **Stars suite**

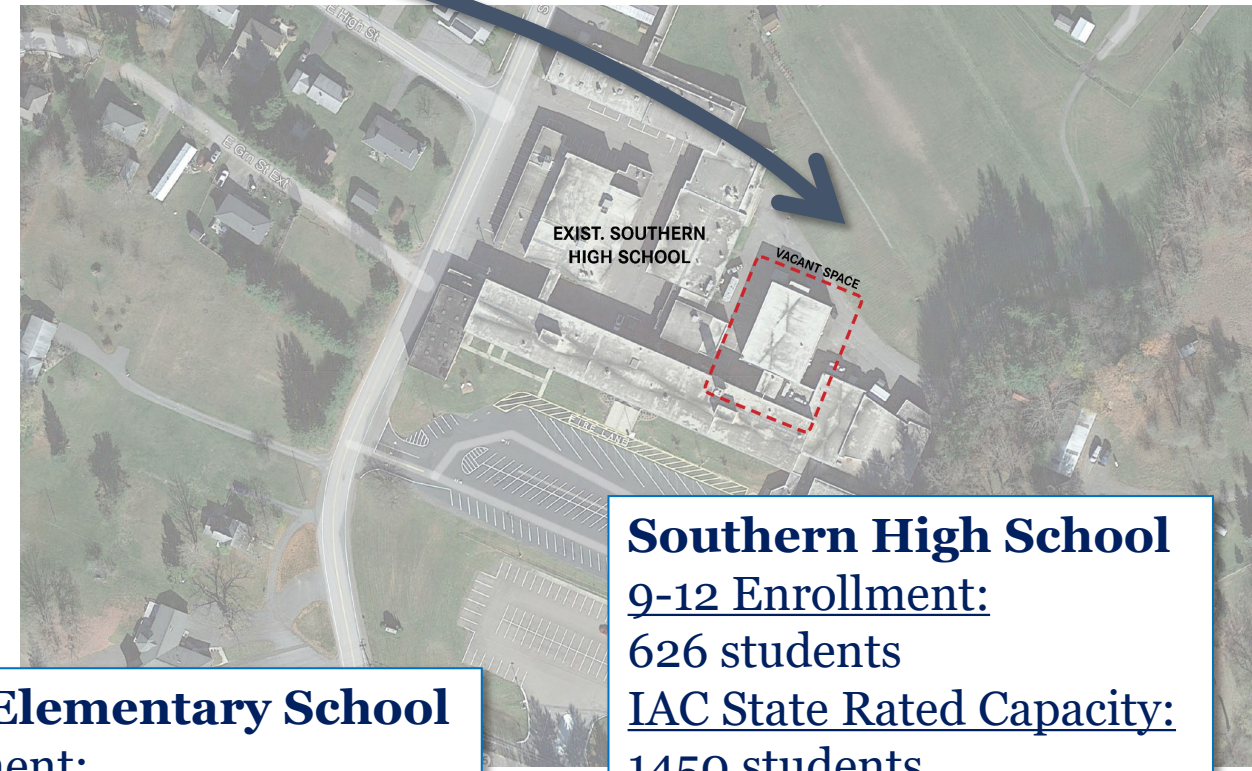
Second Floor Partial

Moving PK-5 to Southern Middle with 6th grade



Southern Middle School
6-8 Enrollment:
458 students
IAC State Rated Capacity:
828 students

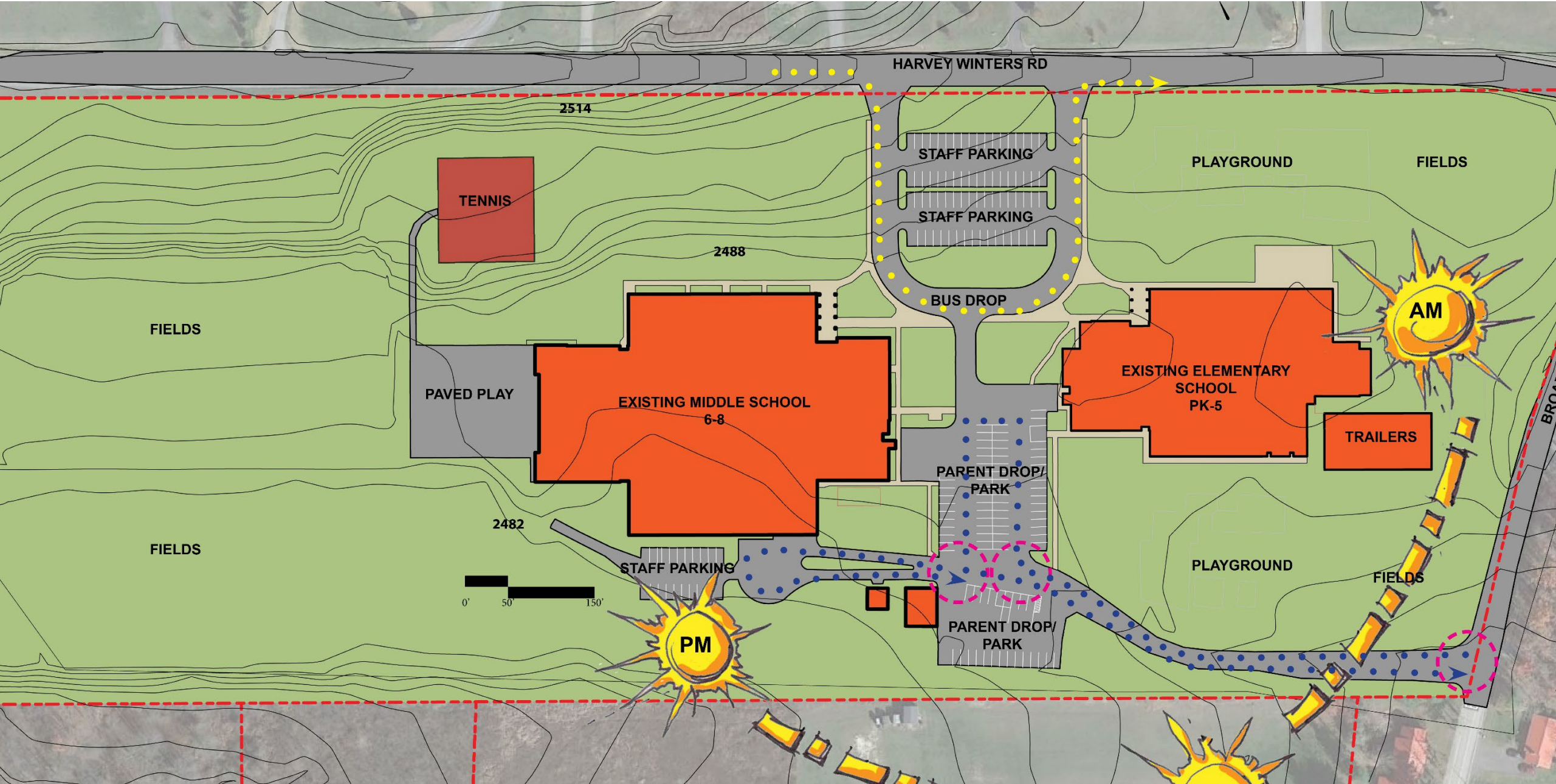
Broadford Elementary School
PK-5 Enrollment:
539 Students
To be demolished



Southern High School
9-12 Enrollment:
626 students
IAC State Rated Capacity:
1450 students

Enrollment figures as of 6/2022

Southern PK-6 – Existing Site



Southern PK-6 Program – Proposed Site Plan



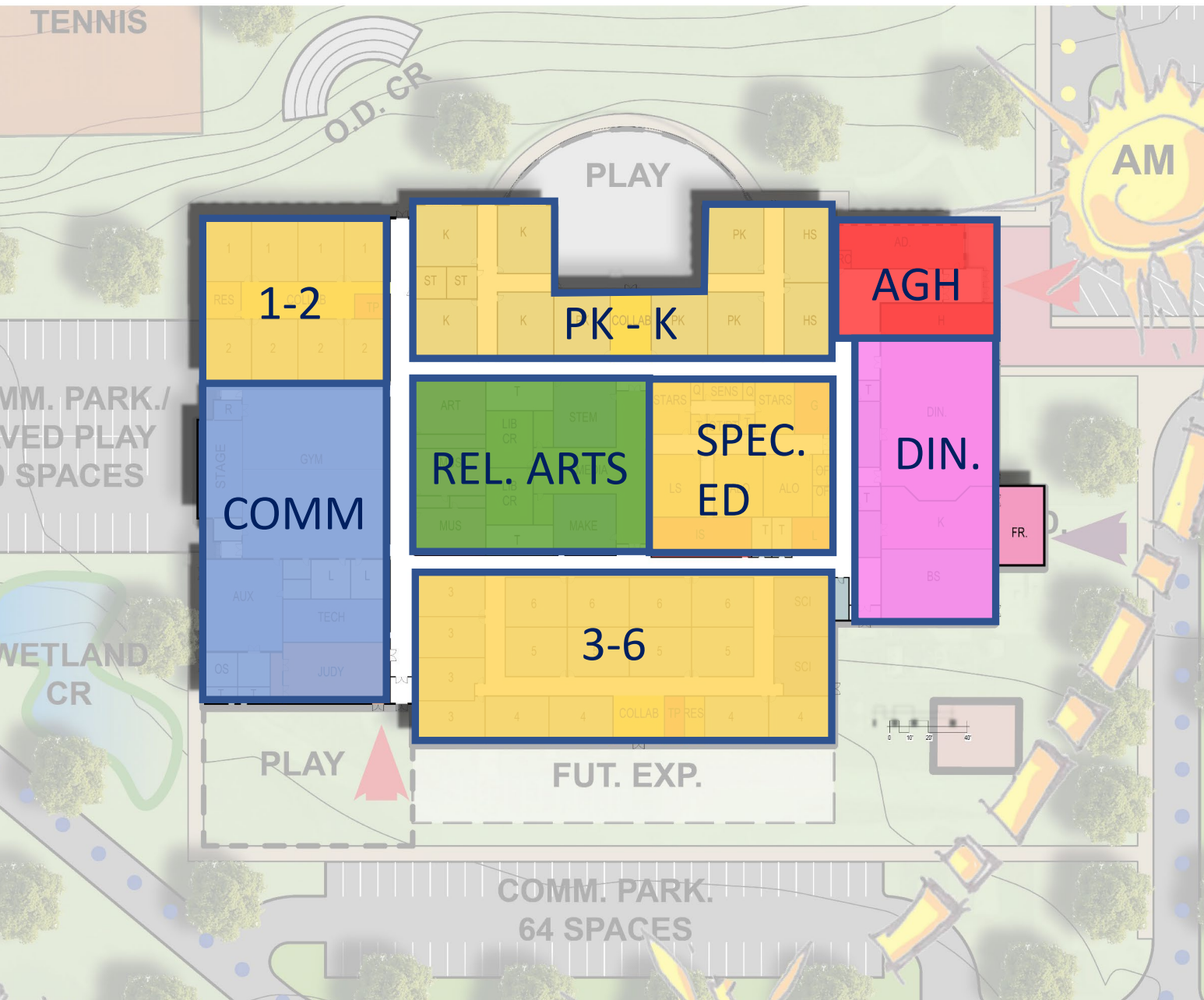


Outdoor Wetland Classroom example



Playground Courtyard Example
J. Blaine Blayton

Southern PK-6 – Proposed Zoning



Proposed Added Value

- **Strategic locations** of additions for more aesthetic and prominent presence along Harvey Winters
- **Neighborhoods** for grade levels with access to site amenities at strategic plan locations
- **Fenced in courtyard / playground** for younger grades and Special Ed.
- **Outdoor learning** opportunities
- Improved **site circulation**
- **Canopy** for bus drop off and pick up
- **Improved site supervision** with Admin at the front entry
- Improved **community** amenities and access for after hours performance
- **Freezer addition** to remove outbuildings from site
- Increased **Community parking**

Southern PK-6 – Proposed Floor Plan



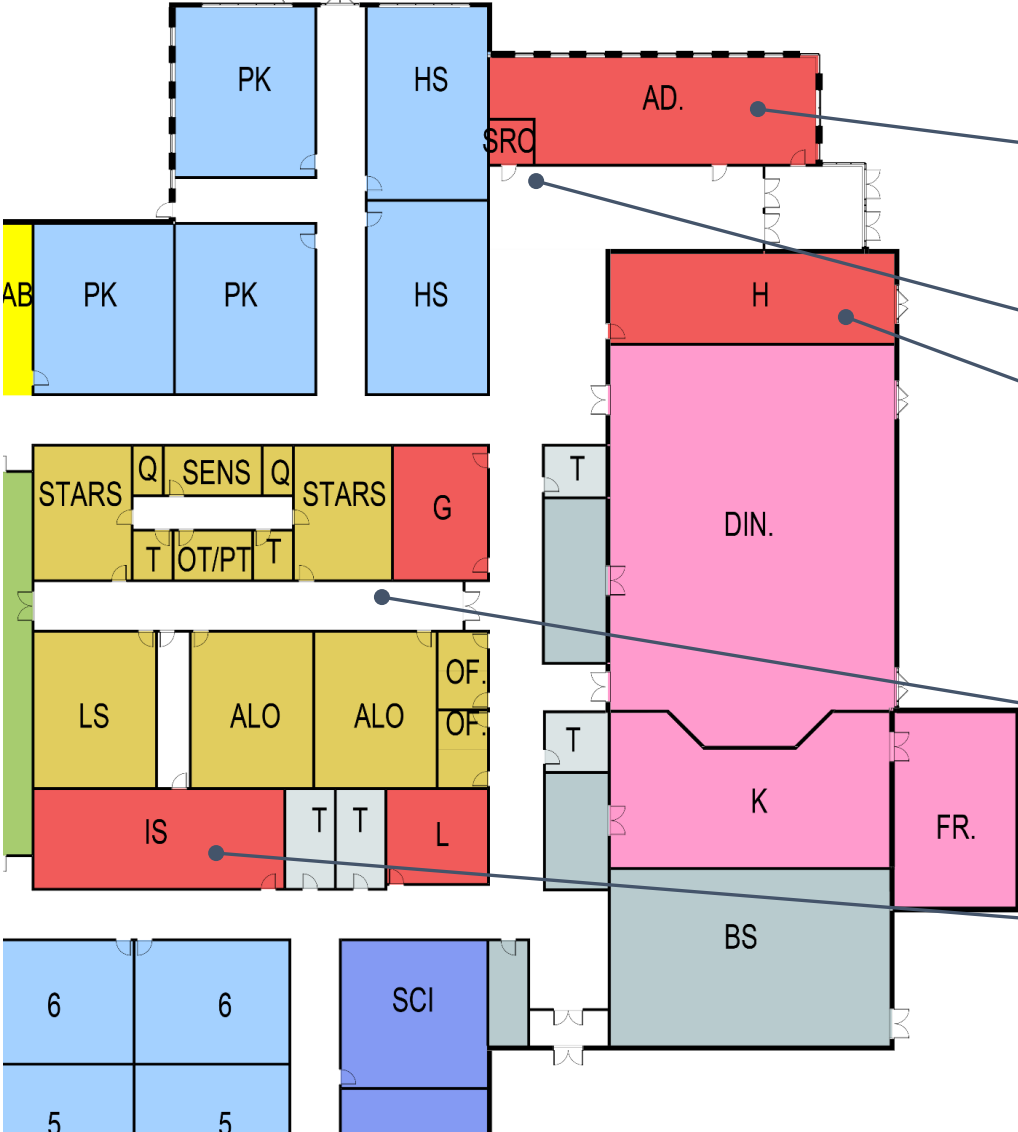
- Department Legend**
- 01 ADMINISTRATION
 - 03 TEACHING AND LEARNING
 - 04 SPECIAL EDUCATION
 - 05 SCIENCES
 - 06 FINE ARTS
 - 09 PHYSICAL EDUCATION
 - 10 MEDIA
 - 11 FOOD SERVICES
 - 12 BUILDING SERVICES
 - 13 COMMUNITY SPACE
 - 14 TOILETS
 - CIRCULATION
 - COOPERATIVE USE SPACE



PLAY

Southern PK-6 – Proposed Partial

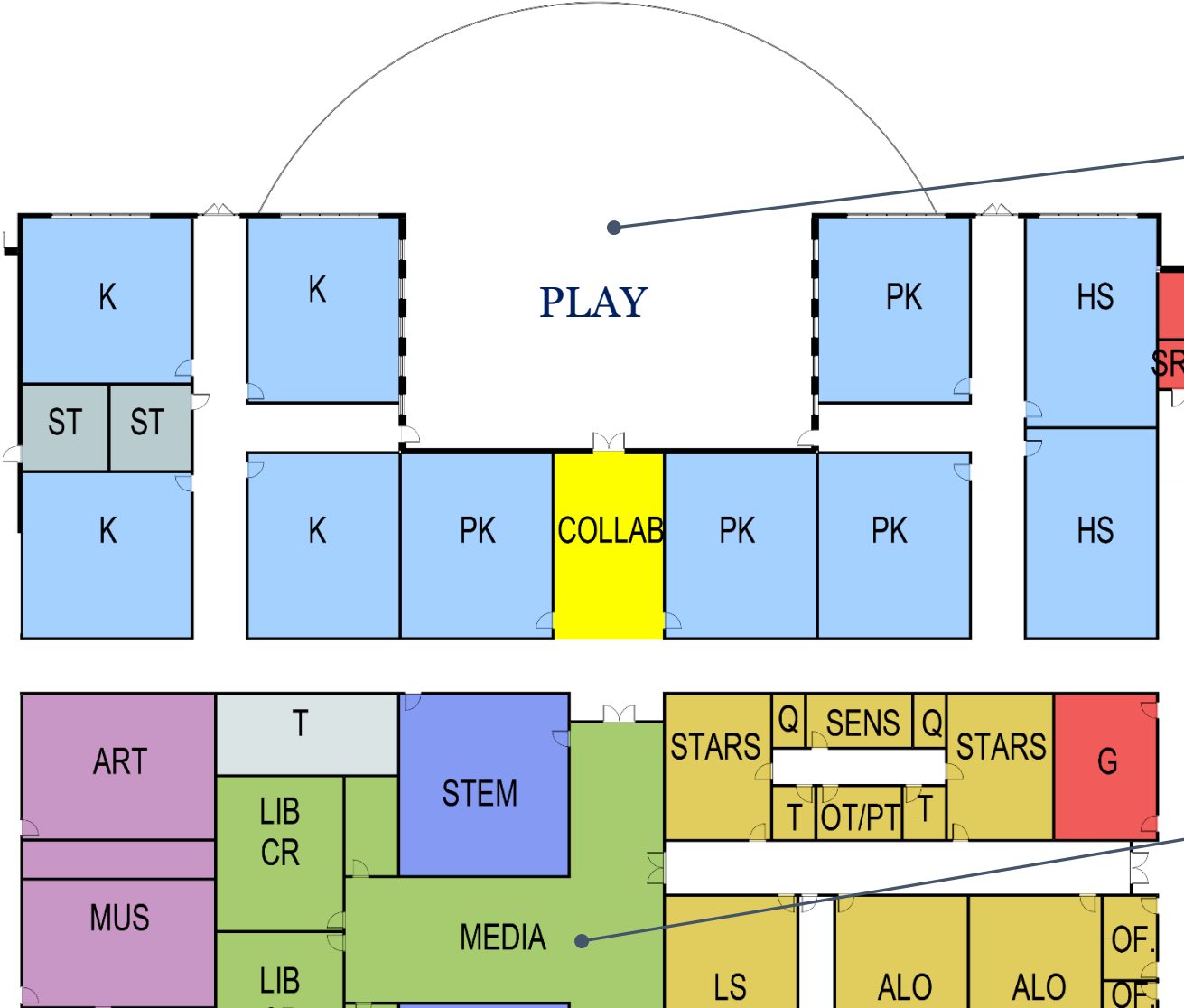
Proposed Added Value



- **Admin** and security vestibule to front entrance for increased security of site
- **SRO office** guarding the main entry
- **Health** with direct access to outside close to the main entrance for emergencies and discretion
- **Special Ed suite** with additional inclusion rooms in commons areas
- **Instructional Support** has direct access to Spec. Ed.

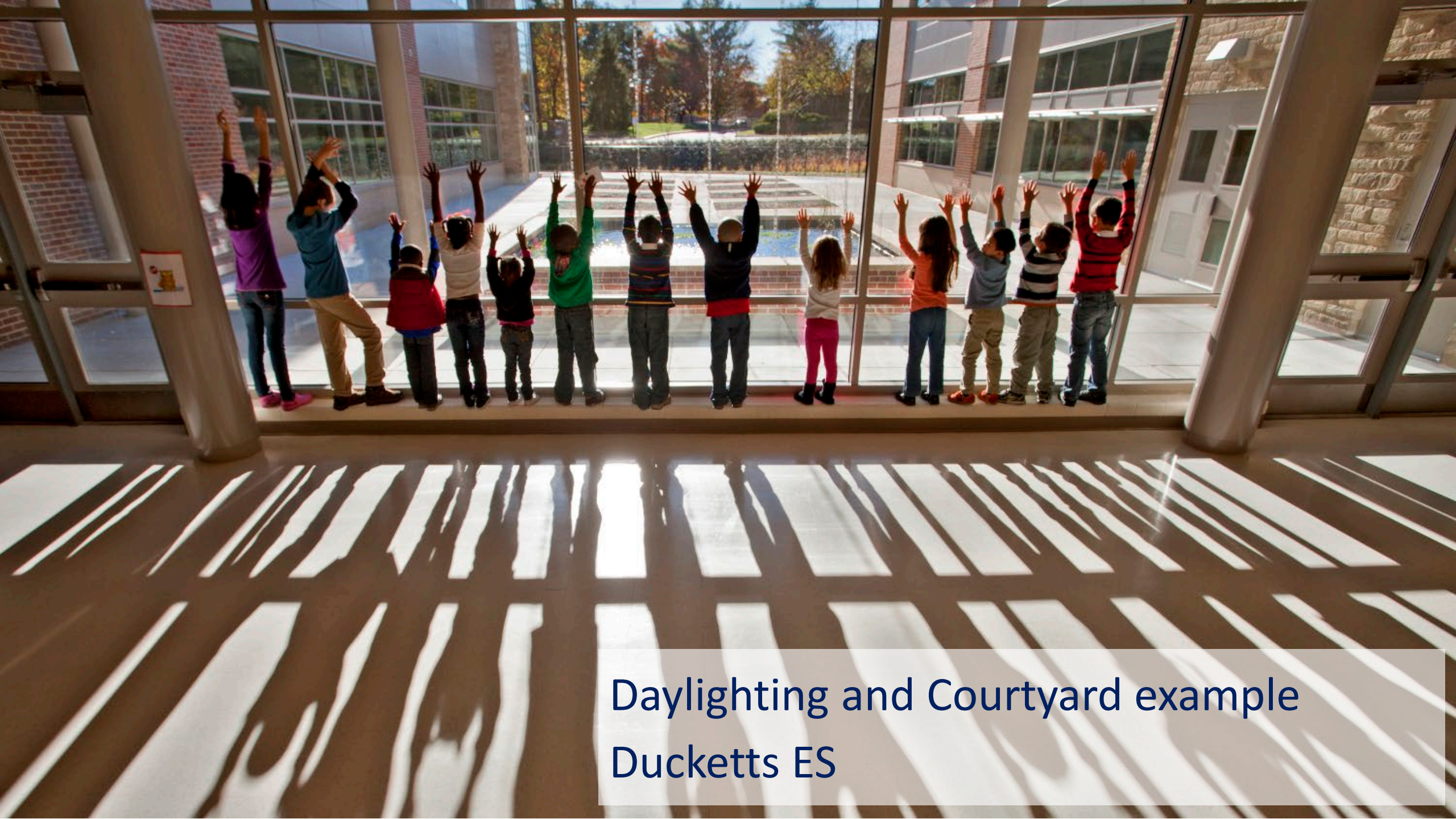
Southern PK-6 – Proposed Partial

Proposed Added Value



- **Secure Courtyard play area**
 - Minimal grading required
 - ADA accessible play area
 - Increased CR's with natural light and borrowed natural light
 - Natural light further into the building through open collaborative area
 - Direct access for Sp. Ed. and grades PK/HS – 2
 - Views and Security

- **Related arts at the core of the building**

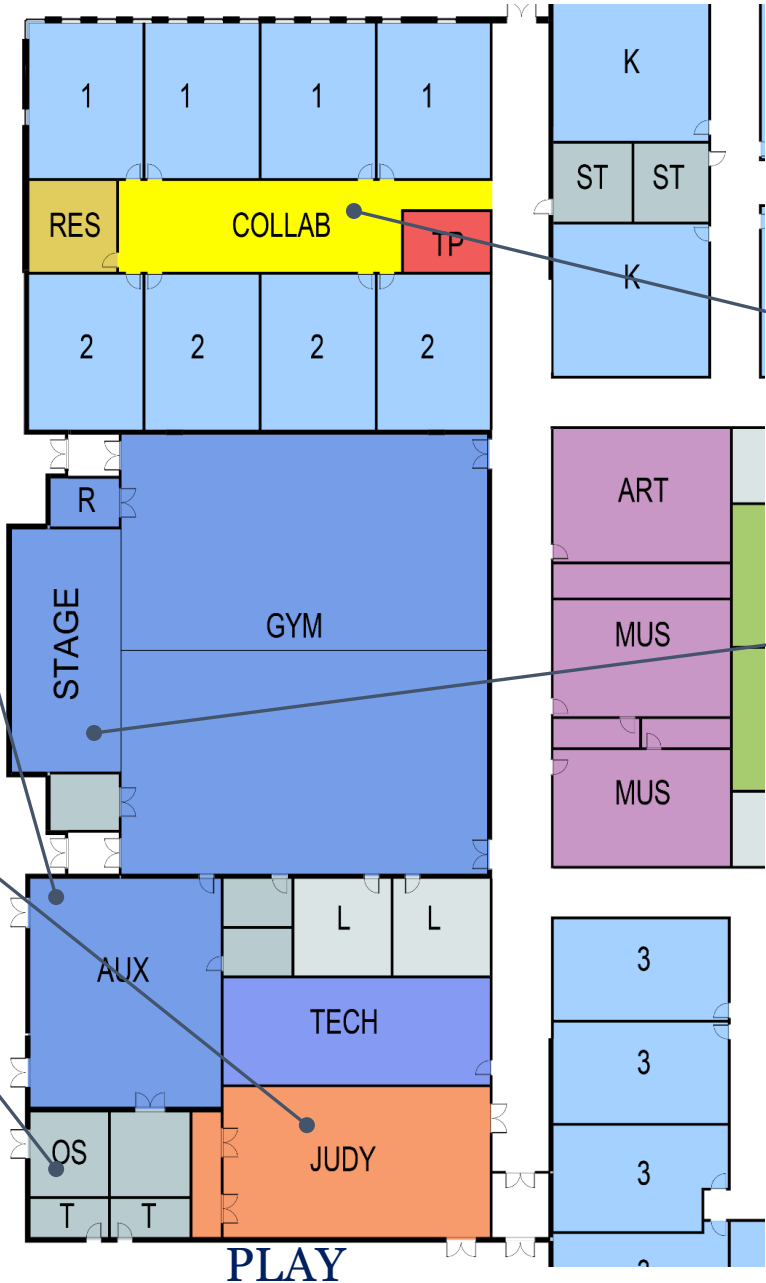


Daylighting and Courtyard example
Ducketts ES

Southern PK-6 – Proposed Partial

Proposed Added Value

- **Extend South Aux Gym** for additional functioning court space as part of the new addition
- **Community access** without hindering security
- **Outdoor Toilet** rooms for after hours access
- **Outdoor Storage** for after hours access



- **Grades PK-2** on the north side of the building. 1st and 2nd grades are grouped in a community.
- **Relocate Stage** to the Gymnasium
 - Accessibility (Ramp)
 - Larger Seating Capacity
 - After Hours Use
 - Potential for out-door stage
 - Proximity to Music Classes and Tech Ed



Outdoor Theater example

Southern PK-6 – Proposed Partial

Proposed Added Value



- **Freezer addition** to remove outbuildings and provide interior access to all storage
- **6th grade corridor** separate from 3-5
- **Science Proximity** to 3-6
- **Open Collaborative** areas for more daylight and flexible open space

Southern PK-6 – Proposed Plan – Aerial View



Southern PK-6 – Proposed Exterior Character





BROADFORD ES

Southern PK-6 & HS – Proposed Cost Summary Sheet

Cost Estimate Summary Escalated to 2025

- **Broadford ES (PK-6) Hard Costs**

- Building – \$41,384,094
- Site - \$4,326,757
- Current ES Demolition – \$1,390,356

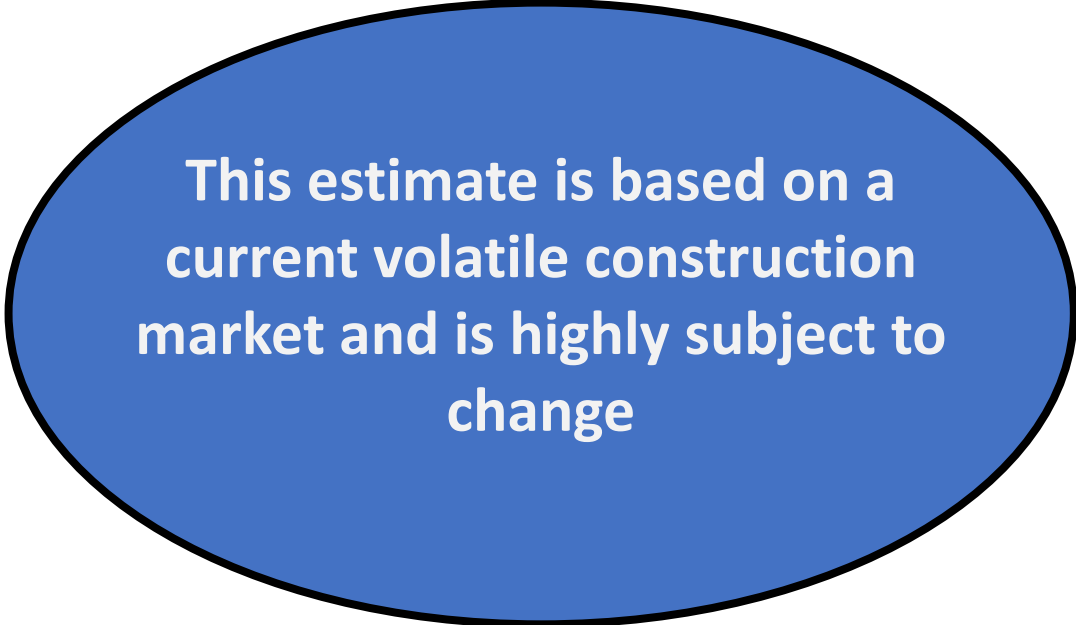
- **Total – \$47,101,207**

- **Southern High (7-12) Hard Costs**

- Building – \$2,458,161.71
- Site - \$602,746.38

- **Total – \$3,060,908**

- **TOTAL PROJECT COST – PK-6 and 7-12 – \$50,162,115**



This estimate is based on a current volatile construction market and is highly subject to change

Next Steps

- Finalize Program Summary for draft submission to the Board of Education by 8/25/2022
- Finalize Schematic Design with any comments from the Board of Education and GCPS
- Final documents prepared relative to any comments from the Board of Education and GCPS
- **Board of Education decision – September Board Meeting**
- Review finalized documents with IAC pending approval from the Board of Education
- IAC State Submission planned for October 2022



Q+A



BROADFORD ES